

GASER

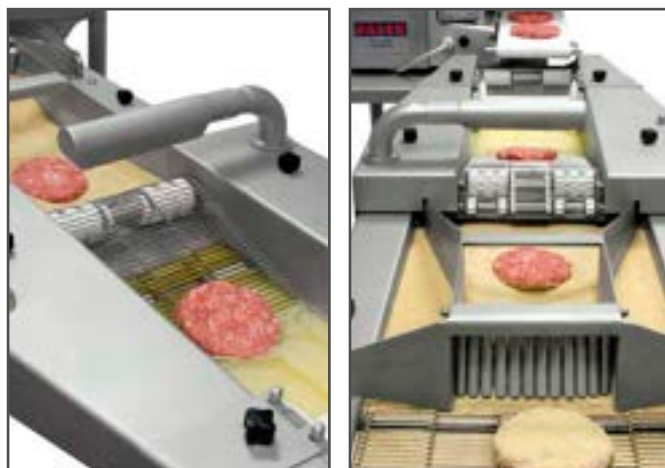
MACHINERY FOR FOOD INDUSTRY

AUTOMATIC BATTER-BREADING MACHINE



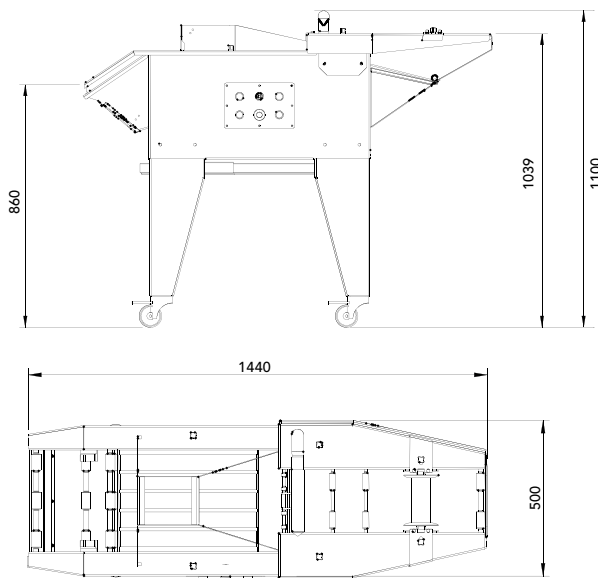
Basic industrial model, suitable for medium productions; can bread all sort of products.

Available as optional accessories: speed adjustment for conveyor belts and blower for excess batter.



TECHNICAL FEATURES

- Automatic battering and breading.
- Output: 2,000 to 3,000 pieces per hour.
Variable speed: 9 to 15m. per minute.
- Useful width: 150mm.
- Electrical operation (Single-phase, 220V)
- Motor power: 250 watts.
- Inverter for bread discharge.
- Blower for excess of batter.
- Pieces drop into the belt or go down ramp to remove excess bread.
- Support for trays at exit.
- Mounted on 4 legs with stainless steel wheels.
- Fully dismantlable for easy cleaning.
- Made of stainless steel and non-toxic plastics (suitable for the meat industry).
- Maximum robustness and durability.
- Easy maintenance.
- Budget price.
- Machine weight: 110 kg
- Dimensions of assembled machine: 1,440 x 500 x 1,100mm
- Dimensions of packed machine: 1,300 x 700 x 700mm
- Additionally, the horizontal outlet of breader belt and the turbine can be assembled on the machine to blow the excess of bread on upper surface of product.



RELATED MACHINES:

- Meatballs former S1500-P, Meatballs & croquettes former S1500-PC, Meatballs & croquettes former mod. DIAPHRAGM GM7000, Hamburger formers, Rotating tables.

MACHINERY FOR THE
FOOD INDUSTRY.



Tabletop meat grinder for small productions.
Available with different cutting systems to choose
from, simple, double or triple.

- Made of stainless steel.
- Table-top machine.
- Head diameter Ø82 mm.
- Cutting systems: Unger / ENTERPRISE.
- 3-phased electric installation 230/400 V, 50 Hz.
- Electric power 1,5 hp, 1,1 kW.
- Production up to 350 Kg/h.
- Dimensions: 310 x 490 x 420 mm.

OPTIONAL ACCESSORIES:

- Table with stainless steel wheels.
- Triple cut system.



RELATED MACHINES:

Mixers, Hamburguers machines, Fillers.

GASER**MACHINERY
FOR THE FOOD INDUSTRY**

ER-20L ER-30L ER-50L hydraulic piston fillers

TECHNICAL SPECIFICATIONS

- Made of stainless steel. Metal lid
- Machined cylinder.
- Inner piston removable for easy cleaning.
- Cylinder drain for cleaning.
- Pressure regulator with manometer.
- Flow regulator to ensure constant speed.
- Separate cooled oil tank with level indicator.
- 24-volt controls.
- Powerful motor to ensure proper operation.
- Stands on two wheels and two fixed feet.
- May optionally have another two external revolving wheels.
- Hydraulic system with flexible high-pressure hoses.
- Ø15, Ø20 and Ø30 mm tubes.
- Automatic cylinder decompression.
- Hydraulic cylinder with stainless steel rod and nut.
- Oil incorporated.

Mod. E-20L (machine dimensions: 1050 x 435 x 537 mm, net weight: 90kg.)

Mod. E-30L (machine dimensions: 1203 x 492 x 576 mm, net weight: 134kg.)

Mod. E-50L (machine dimensions: 1248 x 540 x 540 mm, net weight: 222kg.)

THE BEST QUALITY AT THE BEST PRICE



INDUSTRIAS GASER Ctra, Bescanó, 15, Pol. Torre Mirona 17190 Salt (Girona) - Spain Tel. 34 972 23 65 72

GASER EUROPA вул.Б.Лепкого,1 81160 смт.Щирець Пустомитівський р-н Львівська область Україна L'viv - Ukraine
Тел. 38 097 4718529 / 38 093 4718529